



Palmer Public School



Dr. Joel Bohlken, Superintendent
Sherise Loeffelbein, PK-6 Principal
Greg Morris, 7-12 Principal
Rob Wegner, Activities Director

PO Box 248, Palmer, Nebraska 68864
Phone 308-894-3065

Board of Education
Kathy Wolfe, President
Todd Weller, Vice President
Brian Friedrichsen, Treasurer
Ashley Wissing, Secretary
Heather Shotkoski
Daniel Hake

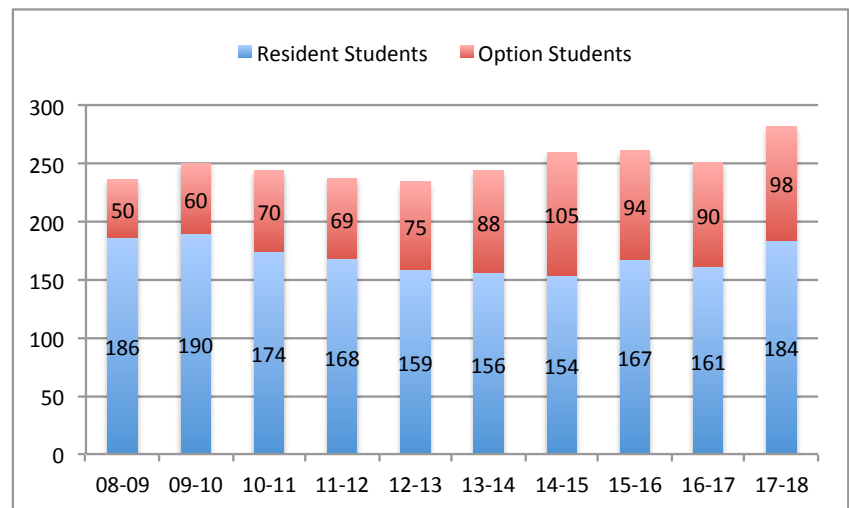
2018 ANNUAL REPORT

Following are some statistics and information about Palmer Public School. This report to the public is outlined in district policy and its content is prescribed in Title 92, Nebraska Administrative Code, Chapter 10 (Rule 10); *Nebraska Rules and Regulations* governing the operation of schools. Much of the information contained relates to the 2017-18 School Year with information regarding prior years for purposes of comparison.

ENROLLMENT HISTORY

With regard to school finance, no factor applies greater influence than student enrollment, affecting state aid, per-pupil expenditure statistics, and staffing determinations. The chart below shows numbers of Resident students and Option students enrolled in K-12 at Palmer over the past 10 years. The enrollment count of K-12 students has fluctuated moderately during the past ten years, with a slight upward trend.

During the ten-year period portrayed in the chart, the enrollment count of resident students decreased then increased in 17-18 to roughly the same number, while the option student enrollment count has doubled, resulting in an overall increase in enrollment of nearly 20%. The **percentage** of the total student population who are Enrollment Option students has increased during this time period from 21% of the students enrolled in 2008 to 34% in 2017. While districts of comparable size and makeup have endured large decreases in enrollment, Palmer Public School has maintained its overall student enrollment the past several years.



ENROLLMENT

The table on the right shows the enrollment by grade for the 2017-18 school year. In grades K-12, there are an average of 21.7 students per grade. With two class sections of preschool, the average class size in the elementary is 18.6 students. Including paraprofessionals, there are 10.5 elementary students per staff member. Palmer's low student to teacher ratio allows us to provide every student with individualized attention and support.

Grade	Students Enrolled 17-18	Grade	Students Enrolled 17-18
PreK	30	7th	21
Kdg	24	8th	24
1st	20	9th	33
2nd	16	10th	25
3rd	26	11th	23
4th	21	12th	18
5th	17		
6th	14		
Elementary Total	168	Secondary Total	144
		District Total	312

DEMOGRAPHIC COMPARISONS

	Nebraska	Palmer
Free/Reduced Lunch	45.83%	41.35%
English Language Learners	6.87%	0.64%
Special Education Percentage	15.12%	11.35%
School Mobility Rate	10.86%	7.80%
Highly Mobile Students 16-17	4.23%	9.33%
Graduation Rate	88.66%	100%
Attendance Rate	94.30%	96.27%
Dropout Rate	.51%	0.0%

The table on the left compares Palmer to the State on several demographic points. Palmer's rate for students receiving free/reduced lunch, special education, and English Language Learners (students whose first language is not English) are below the state average.

Any student who enrolls in two or more public schools during an academic year will be considered a highly mobile student. Any child who enters or leaves school between October 1 and the last day of school is counted in the mobility rate. An individual child is counted only once and is divided by the K-12 Fall Membership count taken October 1. Example: A school building begins the year with 20 students. During the year three students move out and three students move in. The mobility number is six. Example: A school building begins the year with 25 students. During the year five students move out, but one of them returns. The mobility number is five. Palmer had a lower mobility rate but a slightly higher rate of "highly mobile" students moving in and out during the 2016-2017 (most recent year available) school year than the state average.

Graduation rates are calculated on a cohort basis, which is calculated by dividing the number of students entering 9th grade by the number of students who graduate within four years (8 semesters). Again, Palmer regularly exceeds the state average in this category, even though having small class sizes means one student could significantly decrease the figure.

Palmer's attendance rate is consistently better than the state average. This is due largely to parental support. School attendance is one of the most important variables in a student's success. This can also effect funding, because a large difference between Average Daily Membership and Average Daily Attendance can adversely affect state aid.

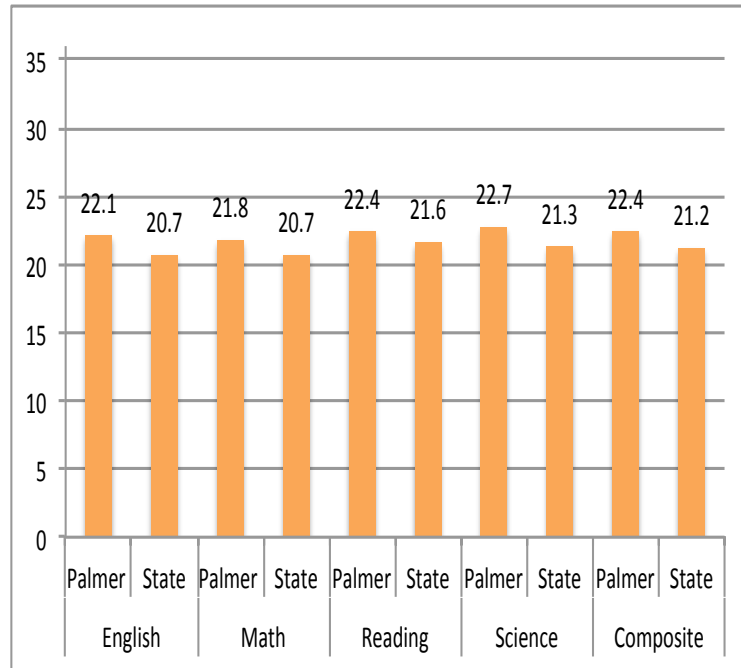
The dropout rate is calculated by dividing the total number of 7th-12th grade students who dropped out by the official fall enrollment for grades 7-12. Palmer has rarely had a student included in this statistic.

STUDENT ACADEMIC PERFORMANCE

Much of the testing information that follows can be found for Palmer Public Schools, and for any school in the state, at <https://nep.education.ne.gov/>.

ACT Score Comparison – 5-Year Average

ACT Test Results: The graph at right shows a five-year average performance history for Palmer students on the ACT with comparative data for the entire state. The ACT is a curriculum-based achievement test made up of four separate exams in English, Reading, Mathematics and Science. It is scored on a scale of 1 to 36, with 36 being the highest possible score. ACT scores are accepted at virtually all colleges and universities across the nation. Beginning in 2017, the ACT test was required for all juniors in Nebraska.



NAI Test Results: Nebraska school districts are required to administer a nationally standardized test to students in one elementary grade (2-5) and one middle school grade (6-8). Districts may select the grade level assessed and the national achievement test used. The table below shows 2017-18 data from the Northwest Evaluation Assessment Measures of Academic Progress (NWEA/MAP) test. Results portrayed are the average student scores on this National Assessment Instrument (NAI).

Northwest Evaluation Association or NWEA

Average Student Scores

Composite Percent Score (0-100%)

	DISTRICT			STATE		
	Composite Percent Score	Reading	Math	Composite Percent Score	Reading	Math
Grade 04	Average Normal Curve Total Score (NCE Range: 1-99)	59%	59%	Average Normal Curve Total Score (NCE Range: 1-99)	58%	55%
Grade 08	Average Normal Curve Total Score (NCE Range: 1-99)	45%	55%	Average Normal Curve Total Score (NCE Range: 1-99)	61%	62%

Students Tested	% Students Tested	Students Not Tested	% Students Not Tested
44	100%	0	0.0000%

NSCAS Test Results: The data below are from the Nebraska Students-Centered Assessment System (NSCAS) tests, which are given in the spring of each year to students in grades 3 through 8. The fact that results can swing so dramatically from one year to the next demonstrates the problem with basing ratings on a once a year test.

The following table shows the “Percent Proficient” on NSCAS English Language Arts (ELA), for students in grades 3, through 8 for All students, Males, Females, and Students Eligible for Free and Reduced Meals. The NSCAS results below include only students in grades 3-8. The data show improvement in scores for all students compared to the previous year.

NSCAS ELA* Year	All Students		Males		Females		Students eligible for free and reduced lunch	
	Palmer	Nebraska	Palmer	Nebraska	Palmer	Nebraska	Palmer	Nebraska
2016-2017	43%	51%	48%	47%	37%	55%	37%	35%
2017-2018	49%	51%	45%	47%	55%	55%	47%	35%

* New assessments aligned to the NCC Ready Standards were first administered in 2016-2017 for ELA.

The NSCAS results below show Palmer students scored higher than the state average on the state math assessments.

NSCAS Math* Year	All Students		Males		Females		Students eligible for free and reduced lunch	
	Palmer	Nebraska	Palmer	Nebraska	Palmer	Nebraska	Palmer	Nebraska
2017-2018	63%	51%	59%	51%	69%	50%	67%	34%

* New assessments aligned to the NCC Ready Standards were first administered in 2017-2018 for Math.

Due to all juniors taking the ACT test, the NSCAS Science tests were given only to students in grades 5 and 8 starting in 2016-2017. The fact that only two grades were included in these results, as opposed to three grades for 2015-16, could be a factor in the decrease in proficiency compared to the prior year. However, the results in 2017-18 increased significantly from the previous year.

NSCAS Science Year	All Students		Males		Females		Students eligible for free and reduced lunch	
	Palmer	Nebraska	Palmer	Nebraska	Palmer	Nebraska	Palmer	Nebraska
2015- 2016	74%	72%	78%	73%	67%	71%	66%	56%
2016- 2017	44%	70%	57%	71%	33%	69%	46%	55%
2017- 2018	56%	68%	59%	68%	53%	67%	44%	52%

AQuESTT Ratings: Beginning with the 2014-15 school year, the State Board of Education and the Nebraska Department of Education used a new accountability system — Accountability for a Quality Education System, Today and Tomorrow (AQuESTT) – to classify schools and districts on state test scores, graduation rates, student participation rates as well as year-to-year improvement and growth. Updates were implemented in the 2017-18 school year due to the federal ESSA, updated college and career readiness standards and assessments, and the State Board Strategic Vision and Direction.

A school's "Status" rating is calculated by combining the percentage of students who are proficient in math with the percent of students who are proficient in ELA. This combined proficiency indicates a school's initial performance level of Excellent, Great, Good, or Needs Improvement. A school's classification Status rating can be adjusted up or down depending on several other factors, such as those listed above. The 2018 Performance Progress Reports, the most recent classification available from NDE, are shown on the following pages.

AQuESTT Classification Details Report 2018

PALMER ELEMENTARY SCHOOL [61-0049-002]

Elementary School Rating

Raw Classification - Summary

Status: 3

Participation: No Adjustment

Tenet Adjustments

Positive Partnerships, Relationships, and Success: N/A

Transitions: N/A (-1 or 0)

Educational Opportunities and Access: +1 (0 or +1)

College, Career, and Civic Ready: N/A

Assessment: +1 (-1, 0, or +1)

Educator Effectiveness: N/A

Raw Classification: 4
Excellent

Evidence Based Analysis Total Score: 103 / 120

Ratings Last Updated: 12-06-2018 *Note: 11th Grade NeSA Science tests from 2015-2016 have been excluded from Science Improvement. Non-Proficiency scores have been updated to correct an issue with 16-17 ELA assessments that should be excluded and to remove older NeSA assessments. Chronic Absenteeism numbers have been updated to correct an issue with some grade levels not being included.*

AQuESTT Classification Details Report 2018

PALMER JUNIOR-SENIOR HIGH [61-0049-001]

Middle School Rating

Raw Classification - Summary

Status: 2

Participation: No Adjustment

Tenet Adjustments

Positive Partnerships, Relationships, and Success: N/A

Transitions: N/A (-1 or 0)

Educational Opportunities and Access: +1 (0 or +1)

College, Career, and Civic Ready: N/A

Assessment: 0 (-1, 0, or +1)

Educator Effectiveness: N/A

Raw Classification:

3 Great

Evidence Based Analysis Total Score: 103 / 120

Ratings Last Updated: 12-06-2018 *Note: 11th Grade NeSA Science tests from 2015-2016 have been excluded from Science Improvement. Non-Proficiency scores have been updated to correct an issue with 16-17 ELA assessments that should be excluded and to remove older NeSA assessments. Chronic Absenteeism numbers have been updated to correct an issue with some grade levels not being included.*

AQuESTT Classification Details Report 2018

PALMER JUNIOR-SENIOR HIGH [61-0049-001]

High School Rating

Raw Classification - Summary

Status: 2

Participation: No Adjustment

Tenet Adjustments

Positive Partnerships, Relationships, and Success: N/A

Transitions: 0 (-1 or 0)

Educational Opportunities and Access: 0 (0 or +1)

College, Career, and Civic Ready: N/A

Assessment: 0 (-1, 0, or +1)

Educator Effectiveness: N/A

Raw Classification:

2 Good

Evidence Based Analysis Total Score: 106 / 120

Ratings Last Updated: 12-06-2018 *Note: 11th Grade NeSA Science tests from 2015-2016 have been excluded from Science Improvement. Non-Proficiency scores have been updated to correct an issue with 16-17 ELA assessments that should be excluded and to remove older NeSA assessments. Chronic Absenteeism numbers have been updated to correct an issue with some grade levels not being included.*

AQuESTT Classification Details Report 2018

PALMER PUBLIC SCHOOLS [61-0049-000]

District Rating

Raw Classification - Summary

Status: 3

Participation: No Adjustment

Tenet Adjustments

Positive Partnerships, Relationships, and Success: N/A

Transitions: 0 (-1 or 0)

Educational Opportunities and Access: 0 (0 or +1)

College, Career, and Civic Ready: N/A

Assessment: 0 (-1, 0, or +1)

Educator Effectiveness: N/A

Raw Classification:

3
Great

Evidence Based Analysis Total Score: 105 / 120

Ratings Last Updated: 12-06-2018 *Note: 11th Grade NeSA Science tests from 2015-2016 have been excluded from Science Improvement. Non-Proficiency scores have been updated to correct an issue with 16-17 ELA assessments that should be excluded and to remove older NeSA assessments. Chronic Absenteeism numbers have been updated to correct an issue with some grade levels not being included.*

FACULTY AND STAFF

The table below shows the Full Time Equivalency (FTE) count of teachers for Palmer Public Schools over the past three years. Palmer has added to the total teaching FTE to accommodate growing student enrollment.

	Total Teacher Count		Total Teachers with Master's Degrees		Percentage of Teachers with Master's Degrees	
Years	State	Palmer	State	Palmer	State	Palmer
2015-2016	23,002	23.24	12,491	7	53.07%	26.92%
2016-2017	23,322	23.90	12,922	12	54.14%	46.15%
2017-2018	23,492	24.08	13,199	11	54.92%	42.31%

The table at right shows both Average Years Experience and Average Salary for teachers in Palmer and the state average. Average teacher salaries in

	Average Years Experience		Average Teacher Salary	
Years	State	Palmer	State	Palmer
2015-16	14.15	11.04	\$51,520	\$42,879
2016-17	14.09	12.65	\$52,534	\$46,975
2017-18	14.03	13.31	\$54,422	\$48,676

comparison to the state change accordingly as Palmer's average years of experience increases or decreases; and as the percentage of Masters Degrees increases or decreases.

FINANCES: GENERAL FUND BUDGET, TAX LEVY, TAX ASKING

The largest single source of receipts for the District is property tax. The table at right shows the District's assessed valuation with a breakdown by county over the past four years, with this year's assessed valuation decreasing 0.99%.

	Assessed Valuation			
County	2015-16	2016-17	2017-18	2018-19
Howard	\$41,068,975	\$42,974,926	\$42,959,236	\$42,306,734
Merrick	\$176,909,767	\$195,378,125	\$197,451,682	\$195,398,909
Nance	\$77,527,000	\$82,914,112	\$86,136,478	\$85,580,937
Total	\$295,505,742	\$321,267,163	\$326,547,396	\$323,286,580
% Increase	18.54%	8.71%	1.64%	(-0.99%)

The table at right shows the General Fund budget requirements for the past three fiscal years as well as the current year. The General Fund is the

	2015-16	2016-17	2017-18	2018-19
General Fund	\$4,182,276	\$4,511,500	\$4,692,500	\$4,727,738
Cash Reserve	\$1,287,995	\$1,544,936	\$937,136	\$772,913
Total Requirement	\$5,470,271	\$6,056,436	\$5,629,636	\$5,500,651
Expenditures	\$3,527,795	\$3,898,789	\$4,296,327	

District's day-to-day operating fund and does not include fiduciary funds such as those used to support activities (Activity Fund) and the Nutrition Fund, or the Bond Fund and Special Building Fund. The difference between budgeted amounts and audited expenditures is due to unforeseeable expenses over the course of the budget year and varying needs for transfers from the General Fund and other funds within the General Fund, primarily the Depreciation Fund; reflected as expenditures from the General Fund.

The table below shows the property tax rates, by fund, for the past three fiscal years and for the current year, as well as a calculation of the amount by which each levy changed. Note: Levies are expressed in dollars and cents per \$100 of valuation.

Fiscal Year	General Fund Levy	Bond Fund Levy	Special Building Fund Levy	QCPU Fund Levy	Total	Levy Change	Percent Levy Change
2015-2016	0.952	0	0	.052	1.004	-.006	-0.59%
2016-2017	0.81681	0	0	.052	0.86881	-.13519	-13.47%
2017-2018	0.769607	0	0.036	0.025022	0.830629	-.038181	-4.39%
2018-2019	0.793312	0	0.025531	0.020163	0.839006	.008377	1.0%

The table at right shows the recent history of the tax has amounts the district asked in support of Palmer Public

Tax Asking	2015-16	2016-17	2017-18	2018-19
Bonds	\$153,664	\$167,060	\$81,708	\$0
All Other Funds	\$2,813,216	\$2,624,141	\$2,630,689	\$2,712,397
Total Asking	\$2,966,880	\$2,791,201	\$2,712,397	\$2,712,397

Schools. The All Other Funds amount includes the Special Bldg asking as well as the Qualified Capital Purpose Undertaking Fund (QCPUF) asking.

The District's State Aid over the last four years is presented below. As the table indicates, state aid to Palmer Public Schools decreased for years before rebounding in 2018-19. The decreases can be attributed to state budget cuts, and increases in property valuations, which increased the amount of local resources calculated in the state aid formula.

During the 4-year period portrayed, State Aid decreased by a total of \$306,129; a decline of just over 28%, before going back up in 2018-19. In 2015-16, the district became a "Non-equalized" district, meaning we receive no State Aid for equalization. The district currently receives state aid only for option enrollment students and the income tax rebate.

Fiscal Year	State Aid	Difference	% Change from previous
2015-2016	\$867,375	-\$224,486	-20.56%
2016-2017	\$857,588	-\$9,787	-1.13%
2017-2018	\$785,732	-\$71,856	-8.38%
2018-2019	\$915,310	\$129,578	16.49%

While total state aid has decreased, the cost of education increased. Some of this cost is due to increased personnel costs but costs associated with increased data tracking and reporting requirements cannot be overlooked.

In comparing 2015 receipts to 2018 receipts, we see the level of support from the state level has decreased substantially. However, the cost associated with the federal and state requirements for data

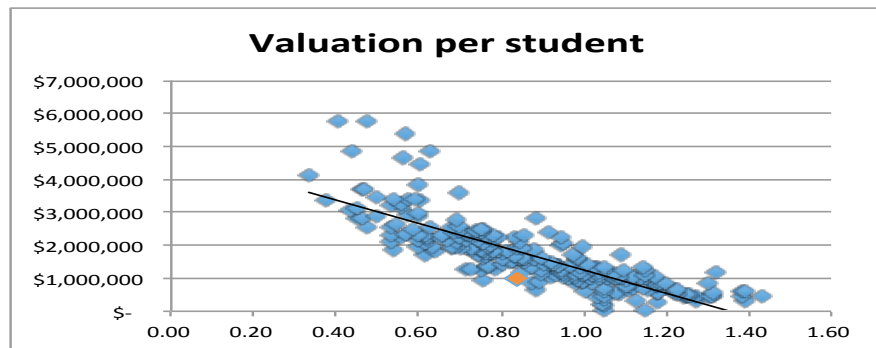
FSY 2014-15		Funding Source	FSY 2017-18	
% Total	Receipted		Receipted	% Total
58.5%	\$ 2,307,325	Local Sources	\$ 2,467,643	63.1%
0.28%	\$ 10,977	County/ESU Sources	\$ 17,730	0.45%
37.2%	\$ 1,468,262	State Sources	\$ 1,279,698	32.7%
3.73%	\$ 147,036	Federal Sources	\$ 133,599	3.4%
0.23%	\$ 8,915	Non Revenue	\$ 10,473	0.26%
Total	\$ 3,942,515	Total Receipts	\$ 3,909,143	Total

tracking, assessment, and reporting has increased. The local sources have necessarily increased to make up the difference in funding. Palmer Public Schools has attempted to build reserves in anticipation of continued decreases in both State and Federal funding.

Per pupil expenditures (PPE) can be affected by a number of factors including fluctuations in enrollment and General Fund expenditures as well as depreciation on the building and equipment in addition to transfers to the Depreciation Fund. Palmer's overall PPE consistently remains near the statewide average and below that for schools of comparable size. Per Pupil Expenditure varies only slightly from "General Fund Operating Expenditures per Formula Student," a critical component in the State Aid funding formula. The GFOE for the next eight larger and next eight smaller schools in the state for 2017-18 are portrayed at right. Unique circumstances (poverty, transportation needs, Special Education...) can have a dramatic affect on a district's budget and should be considered in comparing such data.

District Name	Formula Students	per Formula Student
PAWNEE CITY	276.38	13,193
MAXWELL	278.37	12,024
FRANKLIN	278.74	13,903
EAST BUTLER	279.82	18,224
HITCHCOCK CO	281.82	12,022
SOUTHWEST	283.80	16,815
MC COOL JUNCTION	283.96	11,677
WEEPING WATER	284.54	14,271
PALMER	290.24	11,493
CREIGHTON	293.04	17,451
OVERTON	297.07	10,784
PLAINVIEW	298.69	14,680
CROFTON	301.56	15,364
FULLERTON	301.98	13,061
HEARTLAND	302.26	13,198
BURWELL	303.66	13,334
BLUE HILL	304.16	11,593

A district's amount of valuation per student and its levy are inversely proportional, that is, as one goes up the other goes down. The graph at right shows this with the dots representing every school district in the state. The valuation per student ratio is on the left side of the graph and the total levy on the bottom. The Palmer School District (in orange)



has \$1,036,000 of valuation per student and an 83.9-cent levy, putting us below the trend line for district levies. This graph shows that the two main drivers of a district's levy are the number of students enrolled and the amount of valuation in the district.

The total assets for the funds used by Palmer Public Schools for the past three years are portrayed below. As noted previously in the receipts table, Palmer Public Schools attempted to build reserves in anticipation of continued funding cuts from other sources. That effort allowed reserves to be used in 2017-18 to mitigate an increase in the tax asking to operate the district.

Fiscal Year	Governmental Funds	Fiduciary Funds	All Funds
2015-2016	\$3,341,607	\$87,712	\$3,429,319
2016-2017	\$3,384,607	\$102,642	\$3,487,249
2017-2018	\$3,043,052	\$98,023	\$3,141,075

Governmental Funds=Total Assets of The General Fund, Depreciation Fund, Employee Benefit Fund, Bond Fund, Special Building Fund and The Qualified Capital Purpose Undertaking Fund, School Nutrition Fund, Cooperative Fund
Fiduciary Funds=Activities Fund



Palmer Public School



Dr. Joel Bohlken, Superintendent
Sherise Loeffelbein, PK-6 Principal
Greg Morris, 7-12 Principal
Rob Wegner, Activities Director

PO Box 248, Palmer, Nebraska 68864
Phone 308-894-3065

Board of Education
Kathy Wolfe, President
Todd Weller, Vice President
Ashley Wissing, Secretary
Brian Friedrichsen, Treasurer
Heather Shotkoski
Daniel Hake

Welcome to 2019! We have knocked out half of the school year, which is crazy to think about. Before you know it we will be to March and April, which is our big testing season. Each year the state takes those scores from April as well as other accountability measures and rates schools as needs improvement, good, great or excellent. I am very proud of the work our staff and students have put in and am excited to share that our elementary is qualified as **EXCELLENT** overall by the state of Nebraska standards! There are a number of component, which go into the configuration. Look for the banner reveal soon!

This is an honor for our staff and students however, our staff as a whole, utilize district data more frequently to ensure our students are showing improvement. It also gives us a clearer picture of what our students need instructionally almost instantaneously. We keep a close eye on their progress.

Since returning from break the weather has gotten warmer. While this may be true, please continue to send hats, gloves and heavy coats with your student. Along with the weather changes we have seen a spike in illness unfortunately! Please make sure you are following handbook protocol and do not send your student ill to school. ***This is one time when we don't wish our students to share!***

Pennies for patients will be the last week of January. There will be more information out on that soon. February we will have parent teacher conferences from 4:00-8:00 on the 7th and 13th. Our open house for potential students will be February 8th. If you know of a student that would like to shadow that day it is a 1:00 dismissal so it would be a short day to learn a lot about Palmer Public Schools! Please note that ***February 14th and 15th we do not have school!***

Sincerely,

Sherise Loeffelbein
Pk-6 Principal
Special Education Director
Daycare Director



Palmer Public School



Dr. Joel Bohlken, Superintendent
Sherise Loeffelbein, PK-6 Principal
Greg Morris, 7-12 Principal
Rob Wegner, Activities Director

PO Box 248, Palmer, Nebraska 68864
Phone 308-894-3065

Board of Education
Kathy Wolfe, President
Todd Weller, Vice President
Ashley Wissing, Secretary
Brian Friedrichsen, Treasurer
Heather Shotkoski
Daniel Hake

Parent-Teacher Conferences are scheduled for February 7th and 13th, starting at 4:00pm and ending at 8:00pm. This is a super opportunity for the parents to sit down with their child's teacher to discuss their progress. We encourage all parents to make this a high priority of attending so that PHS teachers can communicate with them on their child's strengths and weaknesses. Also during this time, the teachers will present to the parents the MAP growth and AQuESTT test evaluations. MAP testing is done in October and March to all 7-11 students. The tests consist of Math, Reading, General Science and Language Usage. The AQuESTT testing is for 7th and 8th graders. This is the state required test that judges the students in the same four areas. So we encourage all parents to attend the Parent-Teacher Conferences as we feel they are quite beneficial to both the parent and teacher.

The Nebraska Department of Education will be coming to Palmer Schools on January 30th to perform a Safety Audit. This is a new state mandated process that every school must go through. The NDE audit will consist of on-site inspections, interviews with our students and staff, and a meeting with the PHS Safety Team. The overriding goal is to have all schools as safe as possible and the NDE team will inspect and provide details on any changes we need to make this school year. I think it's safe to say that in 5-10 years, all the Nebraska schools will be performing the same safety procedures.

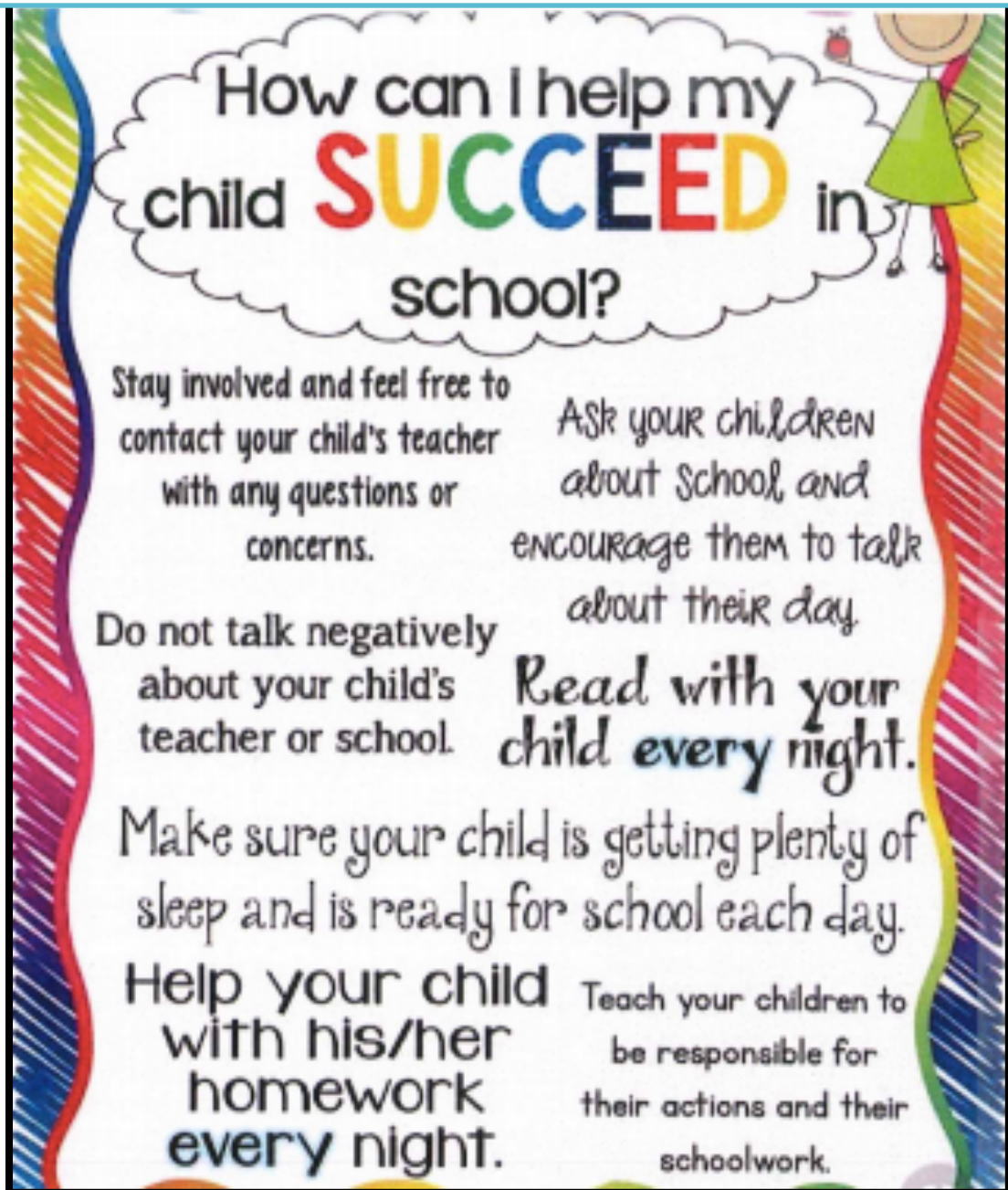
I would like to remind the parents/guardians of school policy involving student absences. Each student is allowed 9 absences for the semester not counting any absences where a doctor slip is returned or a funeral they might attend. If a student misses more than 9, they lose complete credit for a core class and lose credit on a sliding scale to 14 if it's an elective class. The first semester we will have more students lose credit since I've been here. I encourage parents to make every effort to have your child here at school everyday possible.

Finally, Dennis Mottl, our Agriculture teacher for the last 7 school years has decided to retire. Mr. Mottl has been an excellent example for our students to model along with developing an awesome FFA program to go along with his teaching. We have 40+ students in FFA this year and it's all because of the relationships Mr. Mottl has developed with the students. Mr. Mottl has decided it's time for him to slow down and spend more time with his family. Without a doubt, Mr. Mottl will be missed at PHS but we wish him the best in the next chapter of his life.

Mr. Morris

A Note From Mrs. Bruland

The second half of the year is upon us. Students typically start showing some signs of wandering away from the motivation that keeps them successful during the first half of the year. Below are some tips for parents to help prevent this melt down from happening. While we have your children for 7 ½ hours out of the day, the rest of the time they are with you. Please help us to keep your child on the path of success! ~ Mrs. Bruland, K-12 Guidance



MRS. DOBSON'S 3RD GRADE NEWS



I cannot believe that the year is already half over! We are having a great time in 3rd grade so far this year. Recently we had a field trip to Lincoln with the 4th graders and got to visit Memorial Stadium and the State Capitol Building. Despite the cold weather, the kids had a blast getting to run onto the field and then learning about our government.

The kiddos have really been enjoying a new online Math game called prodigy. With prodigy, they are allowed to make their own characters and "battle" one another. You win the battle by answering math questions correctly. It is a great free game and available for 1st through 8th graders. In reading we have been working on Real Narratives and will now be transitioning into Informative writing.



4TH GRADE MYSTERY SCIENCE

With the transition of the new Nebraska State Science Standards, we are on the search for a new science curriculum! This year elementary grades, K-5th are trying out the new science curriculum called, Mystery Science. Mystery Science is an online curriculum that gives the students an opportunity for hands on experience with each lesson. Mystery Science challenges the students to solve the mystery with their own ideas and strategies. The students have been doing an excellent job with the challenges. So far this year in 4th grade, we have covered Units: Birth of Rocks and Waves of Sound. Below, are pictures of the students discovering how sound waves travel with their paper cup telephones! ~Mrs. Thompson



Bader's Brilliant 2nd Graders

I can't believe the 2018-2019 school year is half over! The second graders have been very busy so far this year. In Math, we have reviewed addition and subtraction facts and learned 2 digit addition with regrouping. The students are excited that soon we will be learning multiplication! The second graders are loving science this year! We have used "Mystery Science" to learn about properties of matter, balance and motion, and erosion. A favorite activity was building marble roller coasters. In Social Studies, we have learned about the World, Immigrants and Native Americans. Next, we will be learning about citizens and the government. This class loves to read and is doing a fabulous job reading for AR and Book-It. Soon we will be starting to read chapter books in small groups. The second graders have started to learn to write cursive. We have practiced writing explanatory and narrative paragraphs. I'm proud of the students for working so hard!



Greetings from the Music Department!

At the end of the first semester, we received outstanding news that 11 of the 13 students that auditioned for the Wayne State Honor Band were selected! As I look back through the Music Wall of Fame, this is the largest number we have had representing Palmer! I am beyond proud of all 13 students that tried out. The students that will be representing Palmer at the Wayne State Honor Band on January 26th are:

Symphonic Band:

Rylan Niemoth-Percussion
Faith Blauhorn-Trombone
Alyssa Bucknell-Flute
Keatan Haack-Alto Sax
Tessa Wozny-Bari Sax
Arieanna Dominick-Clarinet

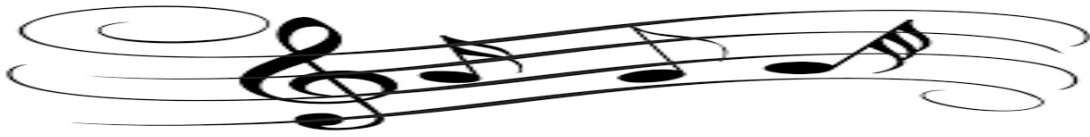
Junior High Ensemble:

Savannah Glause-Trumpet
Clara Kunze-Alto Sax
Caleb Eilers-Trombone
Blaze Blauhorn-Tuba
Joslynn Donahey-Clarinet



Last year we got this great idea to start a jazz band! The students have yet to disappoint. We are up to almost 30 members that come and rehearse every Tuesday morning at 7:00 a.m. Their debut performance was at the Spring Concert last year. After almost all of the 6th grader joined this year, we decided to have the Jazz Band feature the 6th graders at the Christmas Concert! They did an outstanding job. We will be competing at the Northeast Community College Jazz Festival at the end of March. Details will be announced soon.

bestwallpapers.blogspot.com



Back in November, we had our first All-State Band member selected! (While I've been here). Miss Faith Blauhorn was selected on trombone. Faith and her mother Cathy worked numerous hours on this audition. Faith's hard work paid off and she represented our school very well, not to mention she was the only girl trombone player! Reilly Donscheski also is honored as being selected as an alternate for the All-State Choir. Their dedication and hard work on these auditions really bring another level of leadership and musicianship to our music groups. We are proud of them and the others that auditioned.



At Harvest of Harmony, the high school band was moved to Class C this year. They did outstanding and hung in there place in the Top 10! The competition was stiff! We are also fundraising for new band uniforms! They should be debuted in the 2020-2021 marching band season!



With the generous donation from the Endowment Fund, we were able to purchase a new piccolo! Thank you so much! Because of their generosity, we can't wait for the community to come to listen to it's beauty at the following dates and performances:

Goldenrod Conference Music Contest-March 20th (At Greeley)

7-12 Spring Concert-April 9th

District Music Contest-April 12th (At Wood River)

Graduation-May 11th

Memorial Day-May 27th

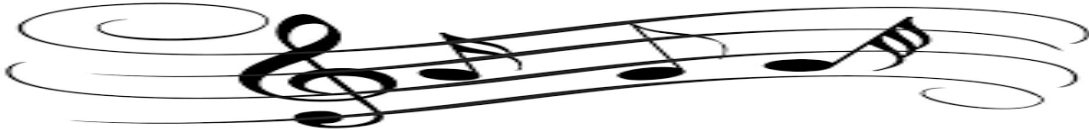


The high school choir has grown 3 times its size from last year! With the help of the administration, we were able to offer another section of the choir. These young men and women have outdone themselves and continue to make me beyond proud. This is by far the best choir I have had the privilege of directing. With the talent we have this year, we have turned our Concert Choir into an A Cappella Choir. Singing A Cappella is difficult and requires strong independence and a great sense of pitch.

These students have that! We can't wait for you to hear us at the following dates:

- ❖ Goldenrod Conference Music Contest-March 20th (At Greeley)
- ❖ 7-12 Spring Concert-April 9th
- ❖ District Music Contest-April 12th (At Wood River)

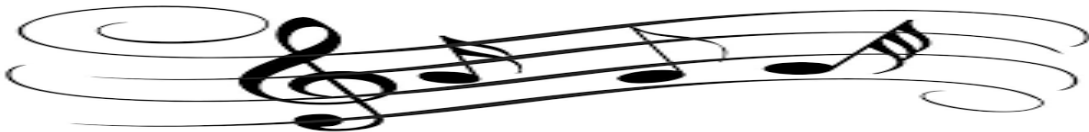
The Junior High Band and Choir will have their opportunities to shine coming up March 5th at the Wayne State Middle School Festival.



Dates to make note of:

- ❖ WSC Honor Band-January 26th at Wayne State College
- ❖ WSC Middle School Festival-March 5th at Wayne State College
- ❖ Goldenrod Conference Music Contest-March 20th at Greeley
- ❖ NECC Jazz Fest-March 25th and 26th
- ❖ 7-12 Spring Concert-April 9th at 7:00 p.m.
- ❖ District Music Contest-April 12th at Wood River
- ❖ Neligh-Oakdale Elementary Honor Band-April 27th at Neligh
- ❖ K-6 Elementary Spring Concert-April 30th at 7:00 p.m.
- ❖ Graduation-May 11th
- ❖ Memorial Day Services-May 27th
- ❖ Masonic All-Star Marching Band Camp-May 28th-June 1st

If there are any parents or adults interested in being chaperones for any of the following music trips, please email me at asake@palmer.esu7.org. Chaperones and sponsor are appreciated always!



As always, contact me if you are looking for any information! Go Tigers! And we hope to see you at our performances!

Mrs. Sake

Room 103

Math, Math, and More Math

MS. DOGETT

Hard to believe we are more than halfway through yet another school year. Time certainly flies when you are having fun!! As usual at this time of year we are working hard to cover all of the state Math standards prior to testing in the Spring. Most of my classes are currently working on Geometry concepts with some advanced equation solving and rational functions thrown in.

Several of the quiz bowl teams have been to competitions already and have brought home some bling. In October the junior high team went to Spalding Academy with the following students placing in their respective events: Savannah Glasue 1st in Math & 2nd in English, Gretchen Brown 3rd in Social Studies & English, Jony Ruvalcaba 1st in Social Studies, Gwyn Brown 1st in Spelling & 3rd in Science, Kyleigh Muller 1st in Health/PE, Joslynn Donahey 1st in English.


In November we were invited to a middle school state competition in Seward. We were able to take 3 teams with one of those teams bringing home the first place trophy. It was a VERY intense competition and I am so proud of our kids!! We were very close to having 2 Palmer teams in the finals. Conference Quiz Bowl will be in February with Districts to follow.


With the spring semester comes testing and more testing. The ELPA21 is set for February, followed by MAP testing in March, and ending with NSCAS (formerly known as NeSA) & ACT in April.


$$x = \frac{-b \pm \sqrt{b^2 - 4ac}}{2a}$$

Mr. Sake

Happy New Year! I am excited to start the second half of the year and in just a few short months send off another class of seniors. This school year has yet another new schedule for me, which I have grown to love. I spend my entire day either in the weight room or working with the journalism students. I have also kept the same junior high schedule coaching football, boys basketball, and boys track. I do miss the energy and excitement of elementary PE but have embraced calmness that comes with working exclusively with 7-12 students compared to elementary.

 Back in August my goal was to take things back to the basics in the weight room with all students. We spent most of the first quarter hammering out technique and trying to maximize efficiency getting the most out of the time we get. By the second quarter my students were chomping at the bit to get under the bar and move some weight and we started to do exactly that. Like any school year, motivation became my biggest concern as the semester ended. I encourage all parents to check in from time to time and ask your student about how PE is going. I know that it can be easy to put this “non-core” class on the back burner. I think a little nudge from home would go a long way for most of my kids to help them focus on taking advantage of this opportunity to lift during the school day. From my experience the vast majority of schools do not offer weight training all periods of the day, in that regard we are very fortunate. Our kids have a great opportunity and we should strive to take full advantage of it.

 In the journalism department we are operating a head of schedule. Having one year of experience has helped me organize the students and keep things right on track. Yearbooks should be going on sale here in the near future, we will be blasting social media, hanging signs around the school, and posting on the school web page. Our staff has done an outstanding job this year taking photos and laying out pages. This year’s book should be beautiful. In the age of social media and cell phone cameras yearbook sales have been on a decline. I would still encourage all students to buy one. A yearbook offers a look back on this school year as a *whole* and we strive to include every student. In 5, 10, or 20 years students will be glad to have so many memories in one place.

 This year the journalism staff has created a weekly publication called “Tiger Tinkles”. The name is a reminder that it is posted in the restrooms at PPS. This is meant to be a light hearted and fun. We print on Mondays and also post to our Facebook page called Palmer Yearbook. If you are not following us on Facebook make sure to get over there and check it out. Not only do we post Tiger Tinkles but we also post pictures when our photographers are out at events trying to capture images for the yearbook. While we are not covering every game and event we have a great staff this year that is covering events as often as they can, producing some great content.



I would like to take the opportunity and publicly thank my journalism students and their families. Sadie Shuda, Maddi Glause, Jesus Guzman, Becca Schrock, Hailee Vlach, and Kristen Glause. These kids have been great to work with. I appreciate the time they spend at events and the support of their parents helping them travel. I would also like to thank the parents who have encouraged their students to get into a weights class and who push their children to form a great work ethic. I believe that as a school, in order for us to compete at our best, all of our athletes should try their hardest to get into a weights class all four years. This is especially important for underclassmen as they stand the most to gain. While even 5 or 10 years ago lifting year round was not a common part of athletics, today it is an expectation. Now where you see a competitive athletic department you will see great participation in the weight room. I'll be the first to say that many things are more important than athletics and I encourage all students to be well rounded. I'll also be the first to say I want to see each and every kid reach their full potential in whatever it is that they choose to do. For those who choose to participate in sports the weight room is an integral part of reaching their potential.

7-12 Resource World

According to the Centers for Disease Control and Prevention, about 41 million Americans get six or fewer hours of sleep per night. For teens, it's even worse. For most adolescents, nine hours of sleep is ideal. Unfortunately, very few are actually managing that. A few ideas to help your students to be successful in school.

1. Unplug Earlier: electronic devices
2. Exercise: Sleep better and feel more alert
3. Avoid sugar at night: Sugar destabilizes our glucose levels, creating a burst of energy.
4. Get up at the same time every day: A consistent sleep schedule will help teens regulate their sleep rhythms.



When teaching teens this time of year it's hard to keep students actively involved when they are trying to catch up on some missed sleep. With regular sleep patterns the body is healthier to avoid the many germs floating around.

Mrs. Bohlken

Mrs. Lane

Mrs. Harrahill

Sun	Mon	Tue	Wed	Thur	Fri	Sat	
<div>HEBREW</div> <div>QUARRY</div>						<div>1</div> <div>B-Soft Pretzel</div> <div>L-Minimal Sub, pasta, potato triangle</div> <div>Pennies for Patients</div>	<div>2</div> <div>Frederick Livestock Adopting Contest</div> <div>USDA is an equal opportunity provider & employer. All meals served, with/choice of milk. Menu subject to change w/out notice.</div>
<div>3</div> <div>L-Chicken Nuggets, Peaches, Scaloped Potatoes.</div> <div>Cash Kids Club</div> <div>B-Friend Toast</div>	<div>4</div> <div>L-Salmon, Mandarin Oranges, Green Beans.</div> <div>B-Cornell</div>	<div>5</div> <div>B-Fruit Turnover</div> <div>L-Milking Barn, Pink Applesauce, Corn, Brownie.</div> <div>H-L-Reading 3.3&4-15</div>	<div>6</div> <div>B-Beef Stew & Gravy</div> <div>L-Chicken Fried Steak, Pineapple, Whipped Potatoes & Gravy, Dinner Roll.</div> <div>4:00pm Parent conferences</div>	<div>7</div> <div>Students 1:00 dismissal</div> <div>L-Hamburger, Glazed Bananas, Fries.</div> <div>Open House</div> <div>Speech (A) Livestock Hay Family Meet</div> <div>B-Breakfast Pizza</div> <div>5:00pm Boys Scout Soup Supper</div>	<div>8</div> <div>Speech (A) Board Meet</div>	<div>9</div>	
<div>10</div> <div>B-Egg Tap-Go</div> <div>L-Albacore & Cheese w/Ham, Strawberry Cup, Peas.</div> <div>Cash Kids Club</div> <div>7:00pm Scout Board meeting</div>	<div>11</div> <div>B-Cornell</div> <div>L-2nd Grade Meat-Friedsteak, Grapes, Carrots, Chocolate Swirl Ice Cream.</div> <div>9:00am GFC Quiz Bowl (A) Hayward Lutheran</div>	<div>12</div> <div>B-Dorot</div> <div>L-Chicken Sandwich, Pink Applesauce, Scaloped Potatoes.</div> <div>10:00am Grade 5/6 Spelling Bee (A) Central City</div> <div>1:00pm Grade 7/8 Spelling Bee (A) Central City</div> <div>4:00pm Parent conferences</div>	<div>13</div> <div>Wayne State Honor Choir</div> <div>Math Counts</div> <div>No school</div>	<div>14</div> <div>No school</div>	<div>15</div>	<div>16</div>	
<div>17</div> <div>National FFA Week 71th-22nd</div> <div>L-Pork Patty on a Bun, Pink Applesauce, Baked Beans, Rice Ketchup Bar.</div> <div>B-Pennies</div> <div>Cash Kids Club</div>	<div>18</div> <div>L-Spaghetti, Peas, Green Beans, French Bread.</div> <div>B-Soft Pretzel</div>	<div>19</div> <div>L-Spaghetti, Peas, Green Beans, French Bread.</div> <div>B-Soft Pretzel</div> <div>L-Cheese Chicken on a Bun, Glazed Bananas, Peas.</div> <div>H-L-Reading 3.3&4-15</div> <div>Nevada Children's Classic @ Kearney</div>	<div>20</div> <div>B-Cornell</div> <div>L-Chicken & Cheese Quasada, Mixed Berry Cup, Raspberry Dessert.</div> <div>NHS Job Shadowing</div>	<div>21</div> <div>L-Sandwich Bar, Grapes, Carrots, CookedChips.</div> <div>B-Breakfast Pizza</div>	<div>22</div>	<div>23</div>	
<div>24</div> <div>B-Dorot</div> <div>L-Chicken, Spanish rice, Pink Applesauce, Corn</div> <div>Cash Kids Club</div> <div>6:00pm Booster Club Meeting</div>	<div>25</div> <div>B-Dorot</div> <div>L-Chicken, Spanish rice, Pink Applesauce, Corn</div> <div>B-Chicken Omelet</div>	<div>26</div> <div>L-Chicken, Almond, Peaches, Green Beans, Breakfast.</div> <div>B-Chicken Omelet</div>	<div>27</div> <div>B-Fruit Turnover</div> <div>L-Salmon Steak, Strawberry Cup, Whipped Potatoes & Gravy, Dinner Roll.</div> <div>H-L-Reading 3.3&4-15</div>	<div>28</div> <div>L-Sandwich Bar, Grapes, Carrots, CookedChips.</div> <div>B-French Toast</div>			

Sun	Mon	Tue	Wed	Thur	Fri	Sat
<h1 style="text-align: center; color: red; background-color: white; padding: 10px;">FEBRUARY</h1>					WSC Honor Choir 2:00pm WR (A) ECONC Invite	1 2
3 1:30pm JH B98 (A) Riverside	4	5 2:30pm JH B98 (H) Humphrey St. Francis	6	7 WR (A) District Tournament 6:00pm VCG98B (H) Nebraska Christian	8 WR (A) District Tournament	9
10 VG98 (A) Subdistricts 4:00pm JH B98 (H) Heartland	11 VG98 (A) Subdistricts	12	13 WR (A) State Championships VG98 (A) Subdistrict Final	14 WR (A) State Championships 6:00pm JVVG98B (A) Fullerton	15 WR (A) State Championships	16
17 VB98 (A) Subdistricts	18 VB98 (A) Subdistricts	19	20 VB98 (A) Subdistrict Finals	21 VG98 (A) District Finals	22 VB98 District Finals	23
24	25	26	27 VG98 (A) State Tournament	28		

MARCH

Sun	Mon	Tue	Wed	Thur	Fri	Sat
					<div> <div>L-Min Corn dogs, Peas, Baked Beans.</div> <div>B-Breakfast Sandwich</div> </div>	2
3	<div> <div>L-K&J-Mendon Orange Chicken- 12-Cheese Hot Chicken, Rice, Pineapple, Broccoli, Potatoe Oatals.</div> <div>B-Parachutes</div> <div>Cash K&S Club</div> </div>	<div> <div>B-Cereal</div> <div>L-Pop in a Bowl, Prit Applesauce, Baked Beans, Oatals.</div> <div>Career Development Event/Corned</div> </div>	<div> <div>Speech (A) Parents Meet</div> <div>B-Scrambled Eggs</div> <div>L-Cheese Pizza, Steakery Cup, Green Beans, Ash Wednesday</div> <div>H&L-Meals 5:30-4:15</div> </div>	<div> <div>B-Breakfast Pizza</div> <div>L-Chicken Nuggets, Peaches, Scalloped Potatoes, Dinner Roll.</div> <div>Students 1:00 dismissal (per C2)</div> </div>	<div> <div>No school</div> </div>	8
10	<div> <div>District Speech (A) Day Center</div> <div>B-French Toast</div> <div>L-Hamburger, Mendon Orange, Baked Beans, Cookies.</div> <div>Cash K&S Club</div> <div>12:00pm -JH District Quiz Bowl (A) Columbus</div> <div>7:00pm School Board meeting</div> </div>	<div> <div>L-1st Grade Mash-Measurot & Cheese w/ham, Steakery Cup, Corn, Chocolate Ice Cream.</div> <div>District VI Lumbos Evaluation Corned</div> <div>B-Biscuits & Gavy</div> </div>	<div> <div>B-Soft Pretzel</div> <div>L-BRD Pulled Pork Sandwich, Peas, Green Beans, Cheese Oatals.</div> <div>H&L-Meals 5:30-4:15</div> </div>	<div> <div>L-Cream Chicken on a Bread, Glazed Banana, Peas.</div> <div>B-Cheese Omelet</div> </div>	<div> <div>L-PBA Sandwich, Prit Applesauce, Potatoe, Turneps.</div> <div>B-Doritos</div> </div>	15
17	<div> <div>B-Egg Tux-Go</div> <div>L-Supper Maroon, Prit Applesauce, Corn.</div> <div>Cash K&S Club</div> <div>7:00pm NHS Inductio Ceremony</div> </div>	<div> <div>L-Pizza With, Mendon Orange, Green Beans, Oatals.</div> <div>B-Cereal</div> </div>	<div> <div>B-Hot Ham & Cheese Omelet</div> <div>L-Chicken Sandwich, Steakery Cup, Scalloped Potatoes.</div> <div>H&L-Meals 5:30-4:15</div> </div>	<div> <div>B-Breakfast Pizza</div> <div>L-Meat in a Bowl, Pineapple, Dinner Roll.</div> <div>5th & 6th HATS</div> </div>	<div> <div>4th HATS</div> <div>B-Fruit Turnover</div> <div>L-Jessays Boluque, Mixed Berry Cup, Peas, Garlic Bread.</div> <div>8:00am Board Dine</div> </div>	22
24	<div> <div>L-Pork Patty on a Bun, Mendon Orange, Potatoe Turneps.</div> <div>B-Biscuits & Gavy</div> <div>Cash K&S Club Emey Celebration</div> </div>	<div> <div>L-Scappell, Peas, Green Beans, French Bread.</div> <div>St. Paul Livestock Judging Corned</div> <div>B-Cereal</div> </div>	<div> <div>B-Doritos</div> <div>L-Tripoli Chicken on Rice, Pineapple, Broccoli, Breadstick.</div> <div>H&L-Meals 5:30-4:15</div> </div>	<div> <div>L-Frenches, Prit Applesauce, Corn, Ice Cream.</div> <div>B-Soft Pretzel</div> </div>	<div> <div>B-Cheese Omelet</div> <div>L-Toasted Cheese Sandwich, Peach Cup, Baked Beans, Rice Ketchup Bar.</div> <div>Students 1:00 dismissal</div> </div>	29
31						30

Sun	Mon	Tue	Wed	Thur	Fri	Sat
					1 VGBB (A) State Tournament	2 VGBB (A) State Tournament
3	4 WSCO Middle School Festival	5	6 VGBB (A) State Tournament	7 VGBB (A) State Tournament	8 VGBB (A) State Tournament	9 VGBB (A) State Tournament
10	11	12	13	14	15 4:30pm TR (A) UNK Invite	16
17	18 2:00pm TR (A) Mendoc County Invite	19	20	21	22	23
24 NECC Jazz Festival	25 9:00am TR (A) Riverside Invite	26 NECC Jazz Festival	27	28 2:00pm TR (A) St. Paul Invite	29	30
31						

MAVERICK